
Manchester Industrial Park

Manchester, Georgia

Site ID: 19903

Meriwether County

Update: 05/04/07

General

Size

Available: 191 Acres

Total: 252 Acres

Largest Tract: 38 Acres

Location

Atlanta: 62.7 miles North

Columbus: 33.3 miles Southwest

Environment

Zoning: Industrial Park

Surrounding Land Use:

North: Agricultural

East: Manufacturing

South: Mixed Use

West: Mixed Use

Inside City Limits? Y

Police: City of Manchester

Fire: City of Manchester

Fire Insurance Rating: Class 6

Utilities

Water

Manchester Water Plant

12" Main: Adjacent to site

Excess Capacity: 0.440 MGD

Electrical Service Area

Georgia Power

Sewer

Manchester LAS

12" Main: Adjacent to site

Excess Capacity: 0.510 MGD

Natural Gas

Local Distributor: City of Manchester

4" Main: Adjacent to site

Supplier: Municipality

Transportation

Highways

Interstate 185: 25.0 mi. West

GA 85: Adjacent to site

Direct Access: GA 85

Airports

International: Hartsfield-Jackson Atlanta, 55.1 mi.

Commercial: Columbus Metropolitan, 30.5 mi.

Public: Roosevelt Memorial, 7.2 mi.

Runway Length: 3,000 ft.

Railroads at site

CSX Transportation

Sea Port

Panama City, FL: 197.2 mi. South

Intermodal Service

Atlanta, GA: 62.5 mi.

Barge Service

Bainbridge, GA: 135.0 mi. South

Contacts

Manchester Development Authority

Phone: 706-846-5341 Fax: 706-846-2255

or

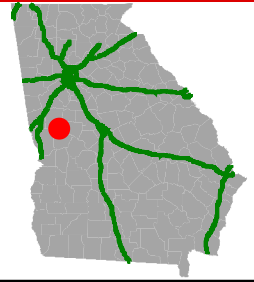
Georgia Power Economic Development

Phone: 404-506-3000 Fax: 404-506-2680

www.georgiapower.com/grc/

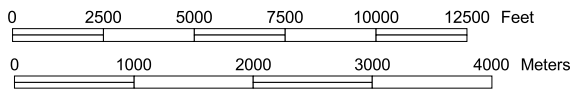
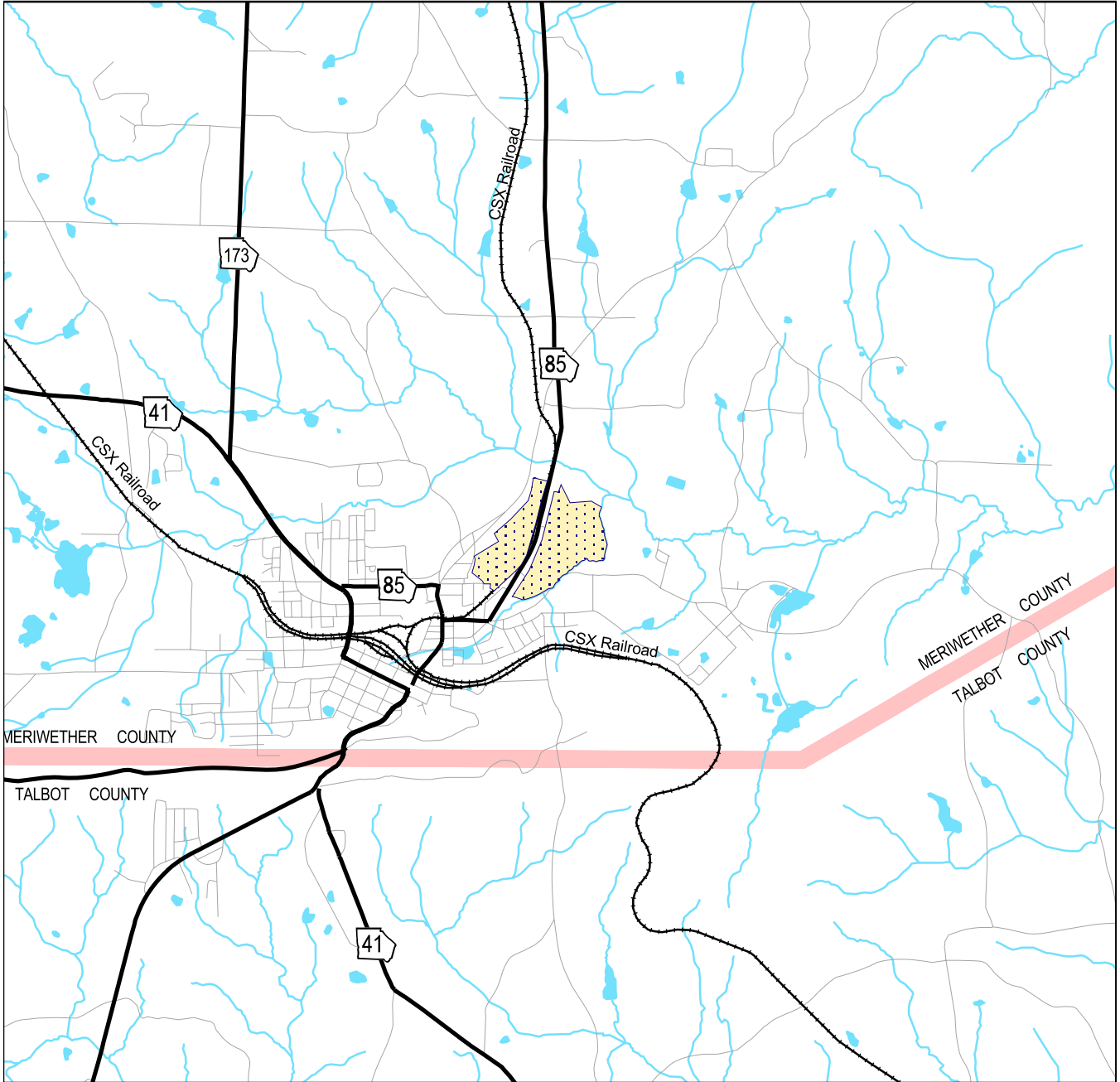


Manchester Industrial Park



Manchester, Georgia

Meriwether County



SOURCE: Georgia Department of Transportation
Georgia Power Economic Development GIS
Site ID: 19903
Plotted: 12/06

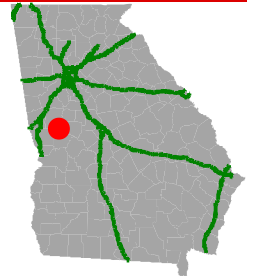
1
Square
Kilometer

1
Square
Mile



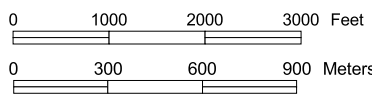
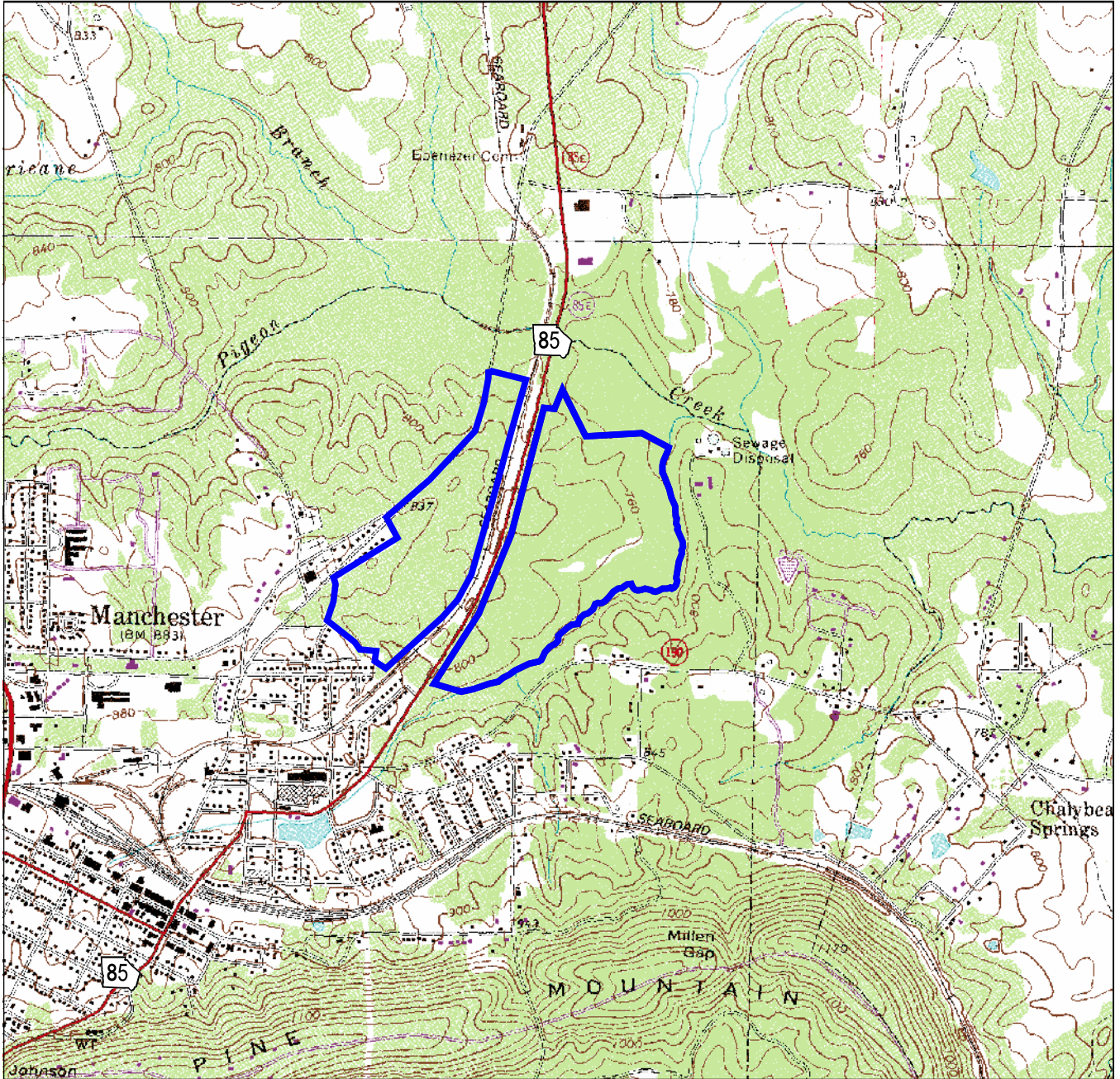
©Georgia Power Company, Inc., 2006

Manchester Industrial Park



Manchester, Georgia

Meriwether County



Contour Interval
20 Feet

SOURCE: USGS 7.5 Minute Quadrangle Maps
Georgia Power Economic Development GIS

Site ID: 19903

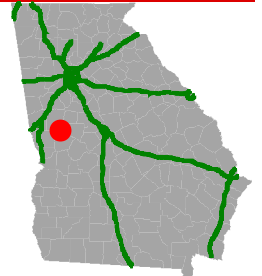
Plotted: 12/06



©Georgia Power Company, Inc., 2006

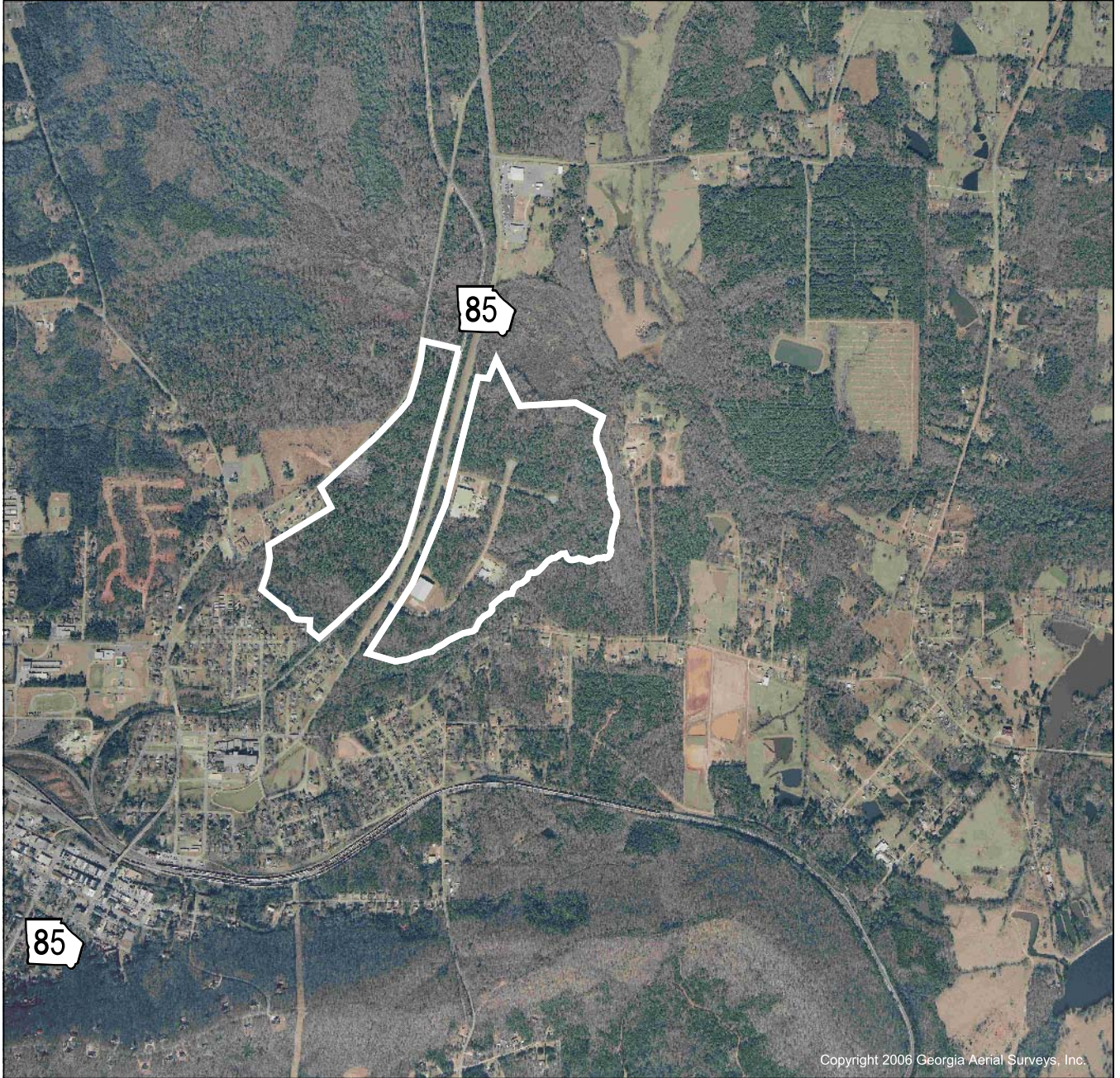
COMMUNITY and ECONOMIC DEVELOPMENT ORGANIZATION

Manchester Industrial Park

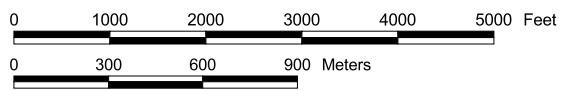


Manchester, Georgia

Meriwether County



Copyright 2006 Georgia Aerial Surveys, Inc.



SOURCE: Georgia Power Economic Development GIS

Site ID: 19903

Plotted: 12/06

Site Photograph 2005



©Georgia Power Company, Inc., 2006